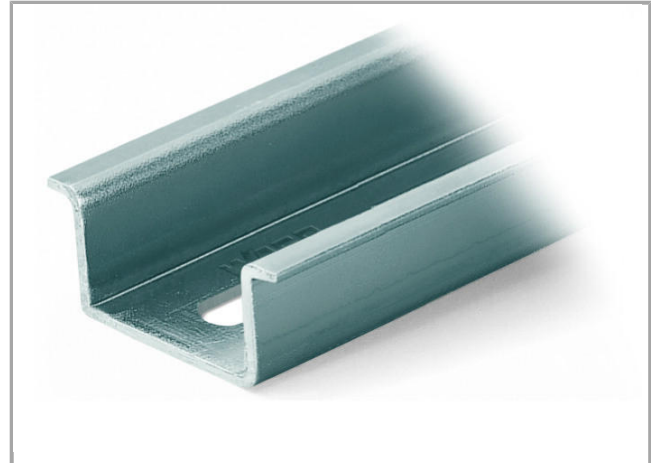
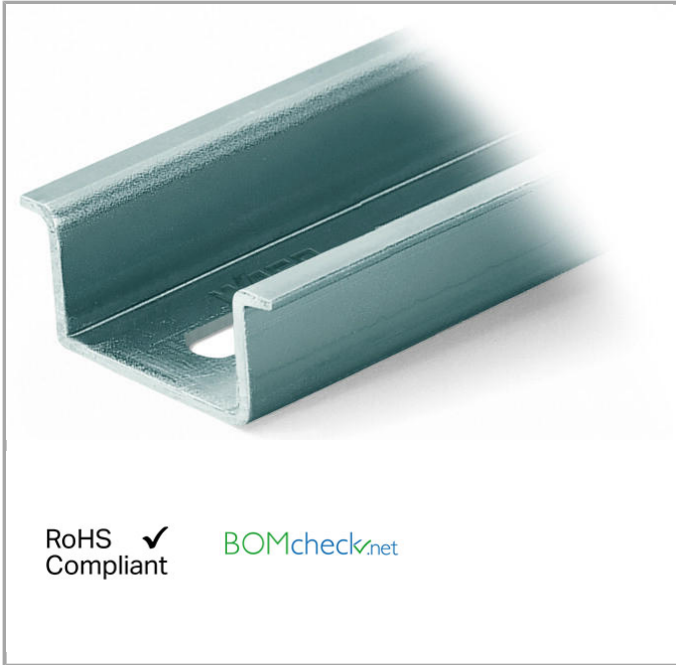


Data sheet | Item number: 210-197

Steel carrier rail; 35 x 15 mm; 1.5 mm thick; 2 m long; slotted; similar to EN 60715



210-197



Data

Technical Data

Main product function

Mounting Accessories

Geometrical Data

Abmessungen B x H x T (mm)	(2000 x 15 x 35) mm
Abmessungen B x H x T (inch)	(78.74 x 0.591 x 1.378) inch
Width	2,000 mm / 78.74 inch
Height	15 mm / 0.591 inch
Depth	35 mm / 1.378 inch

Material Data

Weight	1235 g
--------	--------

Commercial data







Product Group	2 (Terminal Block Accessories)
Country of origin	IT
GTIN	4017332102759
Customs Tariff No.	72169180000

Compatible products

Marking accessories

	Item no.: 210-708 Labels; for TP printers	210-708
	Item no.: 210-808 Labels; for Smart Printer	210-808

assembling

	Item no.: 209-137 Mounting adapter; can be used as end plate; 6.5 mm wide	209-137
	Item no.: 210-148 Angled support bracket; without screw	210-148
	Item no.: 210-149 Screw M 5 x 8; for angled support bracket	210-149
	Item no.: 249-116 Screwless end stop; 6 mm wide; for DIN-rail 35 x 15 and 35 x 7.5	249-116
	Item no.: 249-117 Screwless end stop; 10 mm wide; for DIN-rail 35 x 15 and 35 x 7.5	249-117
	Item no.: 249-197 Screwless end stop; 14 mm wide; for DIN-rail 35 x 15 and 35 x 7.5	249-197

Downloads

Documentation

Bid Text

210-197	doc 24.1 kB	Download
---------	----------------	----------

CAD/CAE - Smart Data

CAD data

3D Download 210-197	URL	Download
---------------------	-----	----------

Subject to changes.